



**INSTALLATION INSTRUCTIONS**  
**GYTR® AIS Removal Kit**  
**1TD-141B0-V0**  
**YFZ450 (2014 ~)**



**DEALER:**

These instructions contain important information for future reference and *must* be given to the customer.

**⚠WARNING**

Please read and understand these instructions completely before installation to avoid possible injury to yourself, or damage to the accessory or vehicle.

**NOTICE:**

This installation requires a torque wrench, Yamaha Owners Service Manual, and should be performed by an authorized Yamaha dealer or other qualified mechanic.  
Alteration of emission-related components constitutes tampering under Federal and State laws and can lead to substantial fines and penalties if used other than in closed-course competition.  
Engine-related competition parts are intended for closed-course racing applications only.

**WARRANTY INFORMATION:**

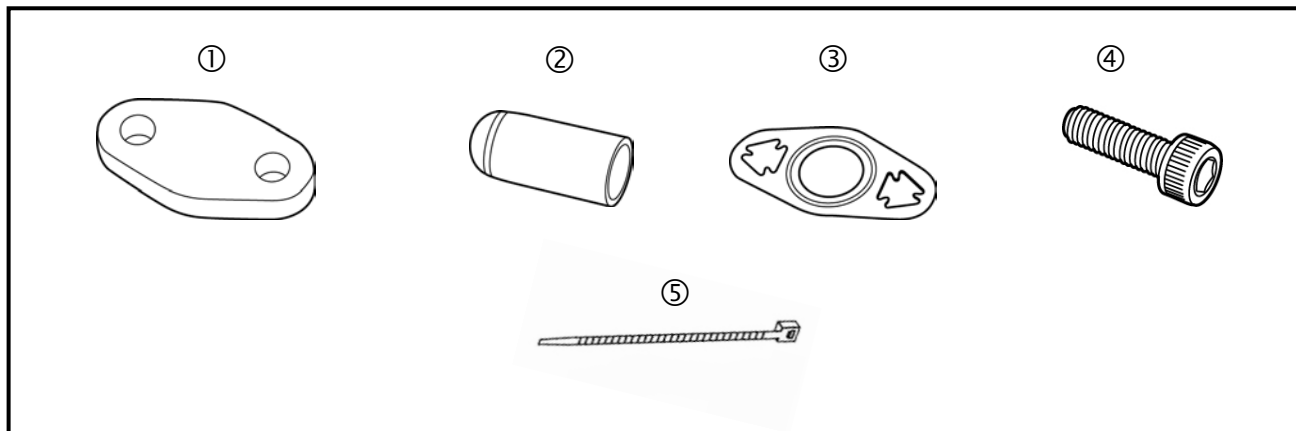
- Genuine Yamaha accessories for YZ/WR models are covered by a 30-day warranty against defects in material or workmanship. Labor for replacement of defective components is not covered. See your Yamaha dealer for a copy of the warranty statement.
- The Limited Warranty provided with new Yamaha vehicles has exclusions for certain failures, including those caused by competition or racing use (except YZ and WR motorcycle models) as well as by abnormal strain or abuse. While installation of these components will not “void” your vehicle’s warranty, specific failures adjudged by Yamaha to have resulted from the installation of accessory components or other modifications, or from competition use (except YZ and WR motorcycle models), may not be covered by warranty.

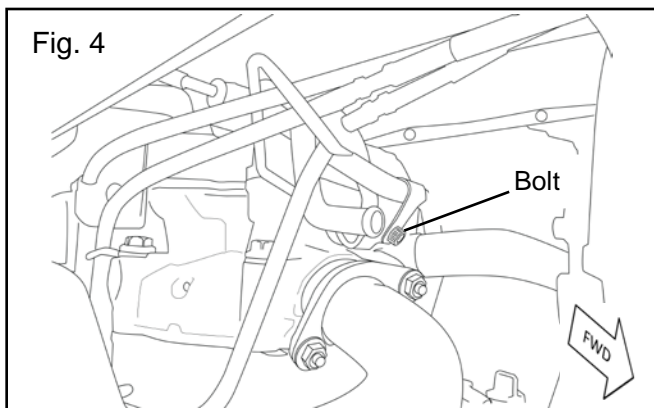
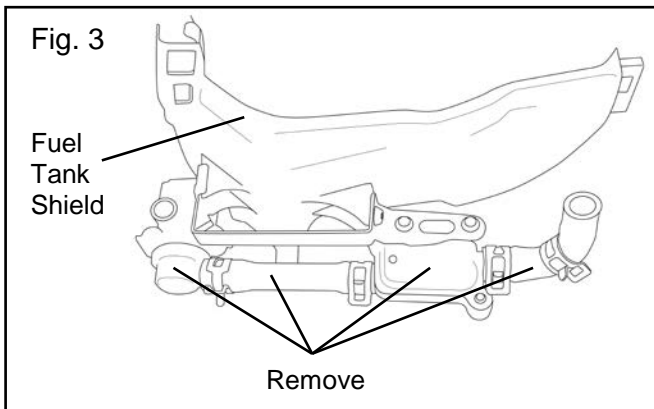
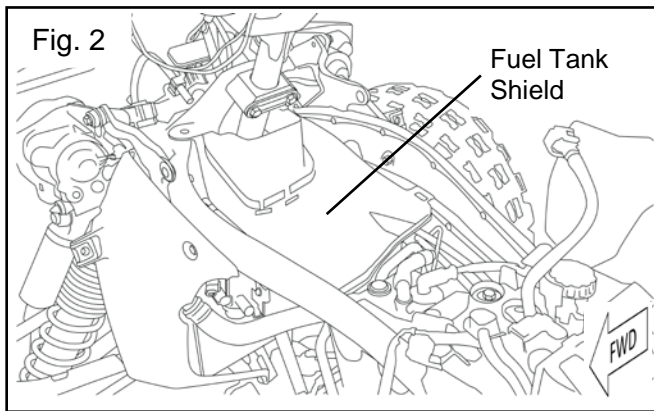
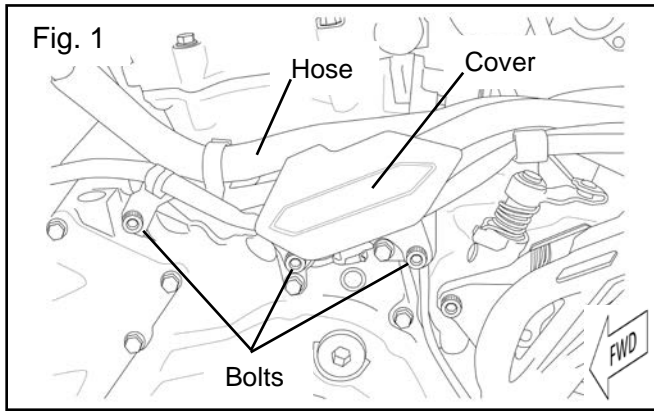
**PARTS LIST:**

This kit contains the following components. Before beginning installation confirm there are no missing or damaged components.

| Item # | Part Number     | Description                          | Qty |
|--------|-----------------|--------------------------------------|-----|
| --     | 1TD-141B0-V0    | AIS Removal Kit                      | --  |
| ①      | *               | Block Off Plate                      | 1   |
| ②      | *               | Air Box Plug                         | 1   |
| ③      | 91314-06020     | Hex Socket Head Bolt M6 x 1.0 x 20mm | 2   |
| ④      | 5TJ-14815-00-00 | Gasket                               | 1   |
| ⑤      | *               | Zip Tie                              | 1   |

\* Part supplied with kit only and not available separately.





**PREPARATION:**

1. Place ATV on a secure and level surface.
2. Clean all mounting surfaces before beginning installation.

**INSTALLATION:**

1. Remove seat, fuel tank, left side cover, right side cover, and front fender referencing the Yamaha Owners Service Manual.
2. Remove the hose, cover, and bolts shown in Fig. 1.
3. Remove fuel tank shield shown in Fig. 2 referencing the Yamaha Owners Service Manual.
4. Remove the components on the bottom of the fuel tank shield as shown in Fig. 3.
5. Remove bolt shown in Fig. 4.
6. Remove hose and AIS pipe shown in Fig. 5.
7. Install gasket ③, block off plate ①, AIS pipe, and hex bolts ④ as shown in Fig. 5.
8. Torque bolts to 10 Nm (1.0 m • kgf, 7.2 ft • lbf).
9. Install air box plug ②, and zip tie ⑤ as shown in Fig. 6.
10. Assemble in reverse order.

**MAINTENANCE:**

Periodically check all hardware for tightness and re-torque as necessary.

**CARE AND CLEANING:**

Wash using a mild soap and water solution and soft cloth.

**CUSTOMER SERVICE:**

For further information see your Yamaha dealer.

**ESTIMATED TIME TO INSTALL: 0.6 HRS**

